

TOUCH



Reeds/Meter : 480

Picks/Meter : 1200

Point/M2 : 576,000

Pile Yarn : **Micro Pol**

Warp Yarn : **Pol**

Weft Yarn : **PP**

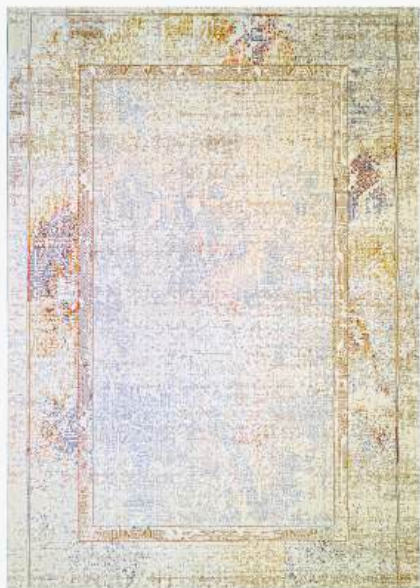
Hight Of Pile : **8+/-1**



TOUCH



1714

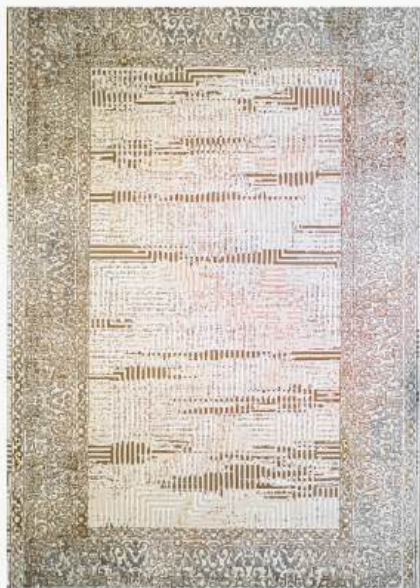


1715

TOUCH



1716



1717



1718



1720

TOUCH



1721



1722

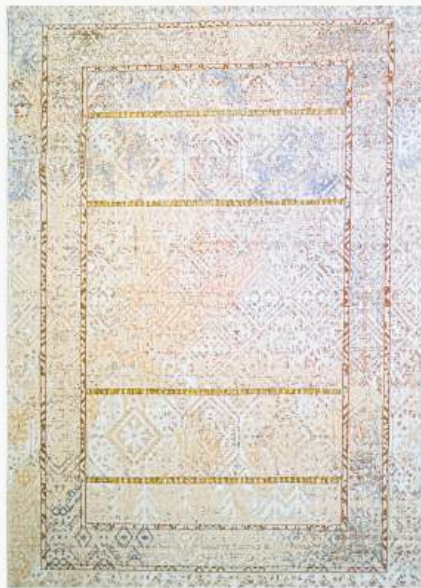
TOUCH



1723



1726



1727



1728

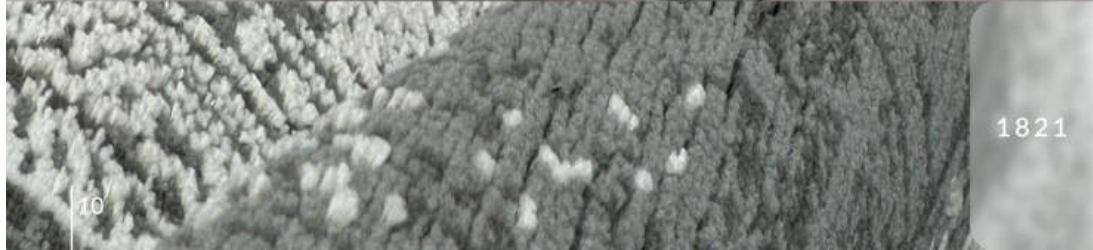


1731



1732

TOUCH



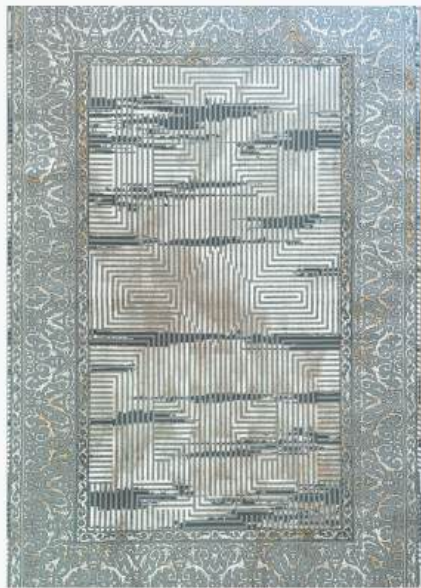
1821



1814



1816



1817



1818



1821



1823