

# PREMIUM



Reeds/Meter : 420

Picks/Meter : 1600

Point : 672000

Pile Yarn : **Micro Pol**

Warp Yarn : **Pol**

Weft Yarn : **PP**

Hight Of Pile : **8+/-1**



# PREMIUM



p08



p09



p15

PREMIUM



P28

# PREMIUM



p22



p28



p52

# MOROCCO



Reeds/Meter : 480

Picks/Meter : 960

Point: 460,800

Pile Yarn : **Micro Pol**

Warp Yarn : Pol

Weft Yarn : PP

Hight Of Pile : 8+/-1



# MOROCCO



m101



m102



m103

MOROCCO



M101

# MOROCCO



m105



m108



m110



# MOROCCO



m111



m113



m115

# COLORFUL



Reeds/Meter : 420

Picks/Meter : 1600

Point : 672,000

Pile Yarn : **Micro Pol**

Warp Yarn : **Pol**

Weft Yarn : **PP**

Hight Of Pile : **8+/-1**



# COLORFUL



1320



1322



1328

COLORFUL



1322

# COLORFUL



1334

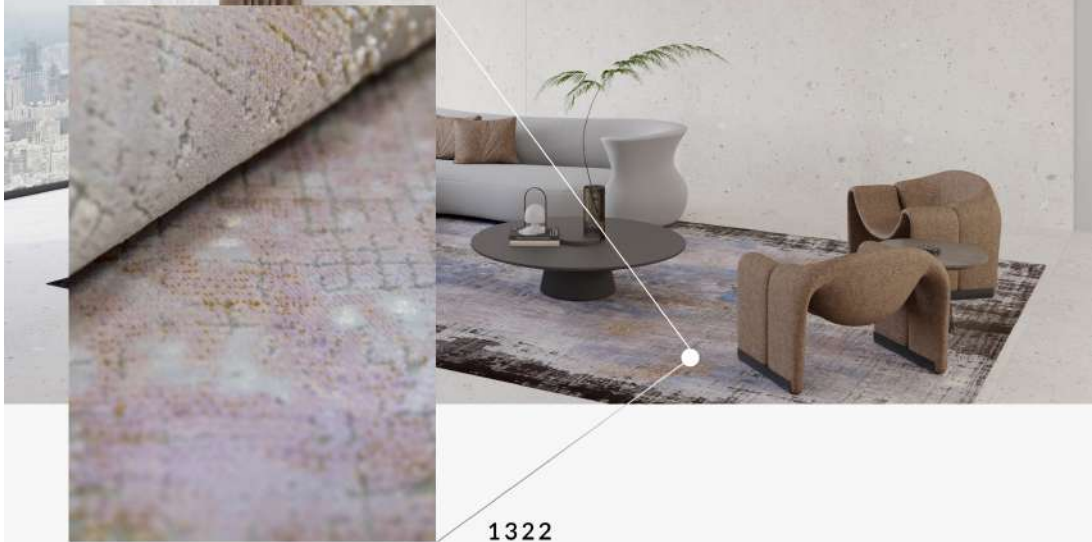


1405



1408

COLORFUL



1322

# COLORFUL



1422



1428



1434

# PLATINUM



Reeds/Meter : 420

Picks/Meter : 1600

Point : 672,000

Pile Yarn : **Micro Pol**

Warp Yarn : **Pol**

Weft Yarn : **PP**

Hight Of Pile : **8+/-1**

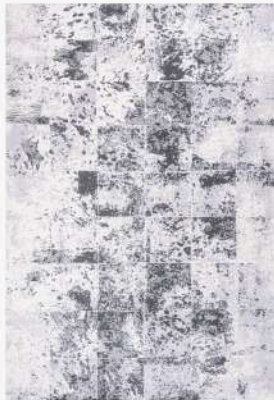




# PLATINUM



5003



5004



5005

# PLATINUM



5015



5025



5028

PLATINUM



5028

# TIFANI



Reeds/Meter : 420

Picks/Meter : 1600

Point : 672,000

Pile Yarn : **Micro Pol**

Warp Yarn : **Pol**

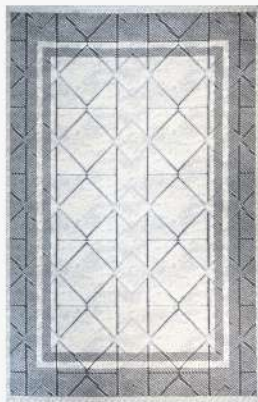
Weft Yarn : **PP**

Hight Of Pile : **7+/-1**

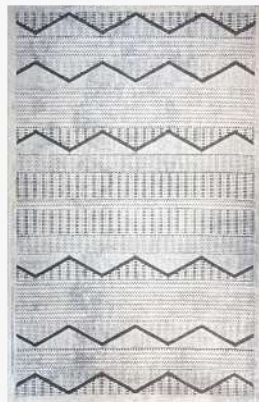




6001



6003



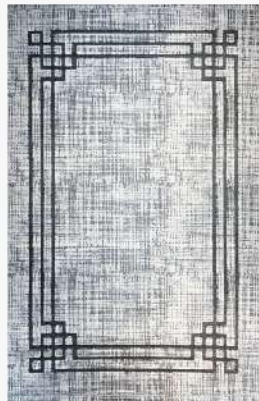
6005



6006



6008

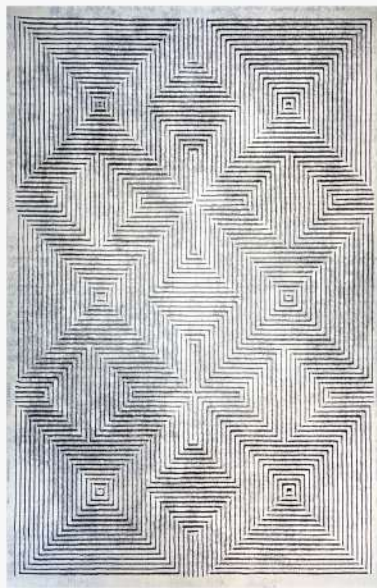


6009

# STRIP



7000



7002

# STRIP



Reeds/Meter : 420

Picks/Meter : 1600

Point : 672,000

Pile Yarn : Micro Pol

Warp Yarn : Pol

Weft Yarn : PP

Hight Of Pile : 8+/-1

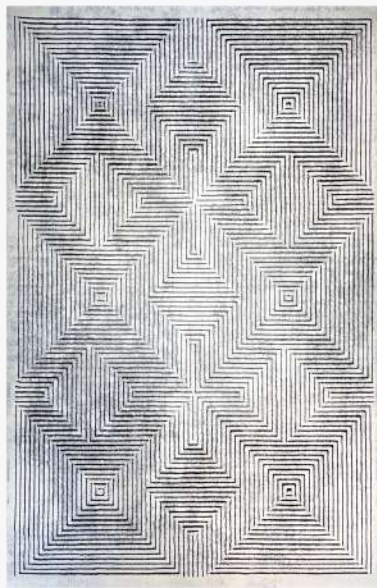




# STRIP



7000

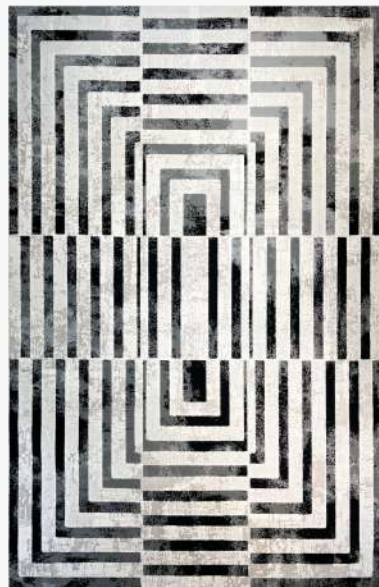


7002

STRIP



7005



7006

# MULTIANT



Reeds/Meter : 420

Picks/Meter : 1600

Point : 672,000

Pile Yarn : **Micro Pol**

Warp Yarn : **Pol**

Weft Yarn : **PP**

Hight Of Pile : **8+/-1**



# MULTIANT



1542



1543

# MULTIANT



1546



1549

MULTIANT



1549

# MULTIANT



1551



1554

# MULTIANT



1559



1570



# 3D MAX



Reeds/Meter : 420

Picks/Meter : 1600

Point : 672,000

Pile Yarn : **Micro Pol**

Warp Yarn : **Pol**

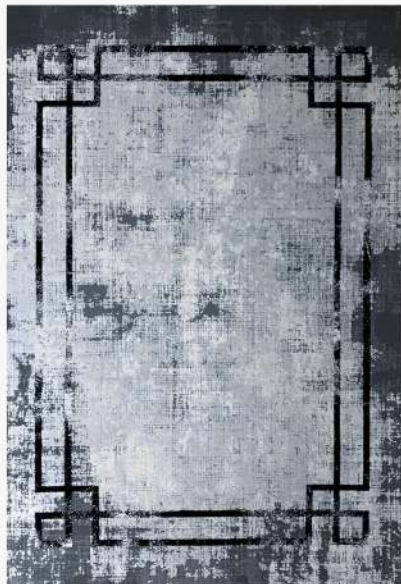
Weft Yarn : **PP**

Hight Of Pile : **8+/-1**





02



03

3D MAX





05



08

STRIP



03



18



35

# TOUCH



Reeds/Meter : 480

Picks/Meter : 1200

Point/M2 : 576,000

Pile Yarn : **Micro Pol**

Warp Yarn : **Pol**

Weft Yarn : **PP**

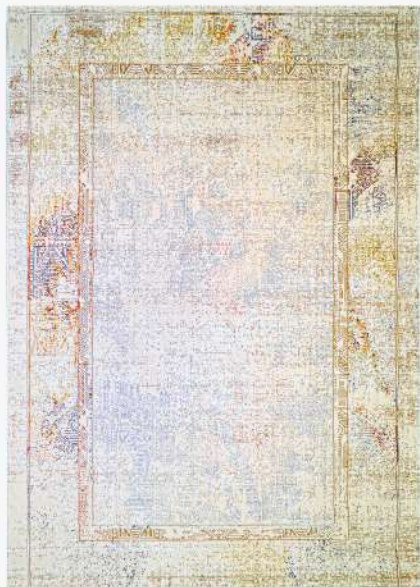
Hight Of Pile : **8+/-1**



# TOUCH



1714



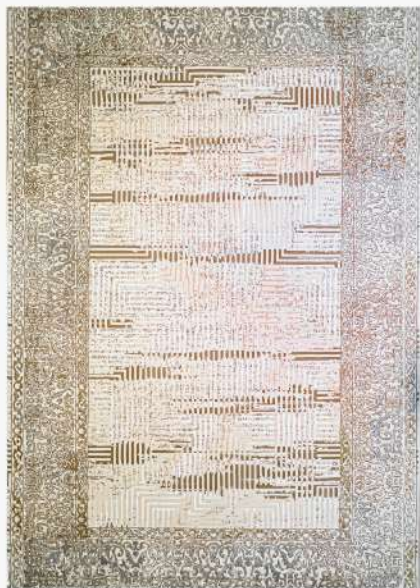
1715



# TOUCH



1716



1717

# TOUCH

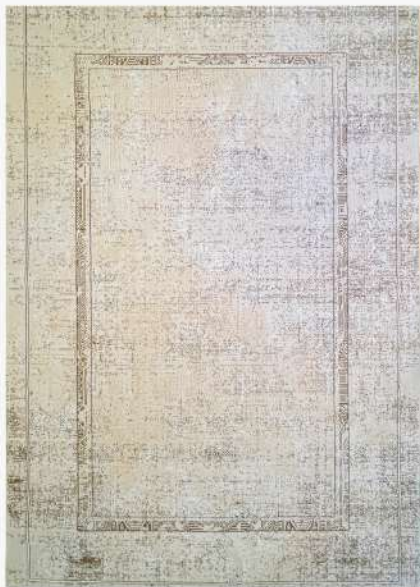


1718



1720

# TOUCH



1721



1722

# TOUCH

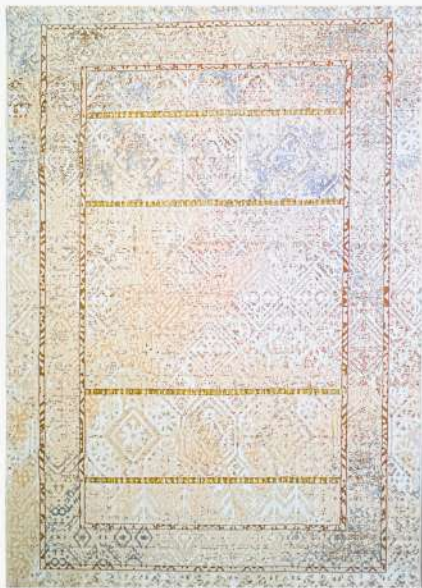


1723



1726

# TOUCH



1727



1728



1731



1732

TOUCH



1821

# TOUCH

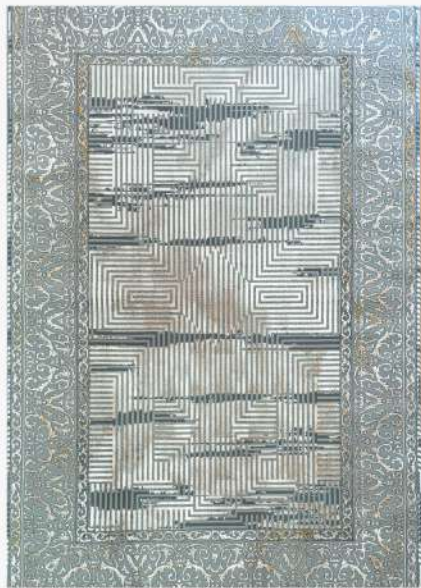


1814



1816





1817



1818

# TOUCH



1821



1823